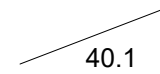


Amont pont Canal		Amont passerelle		Aval passerelle piétonne	
Profil	Cote PHE	Profil	Cote PHE	Profil	Cote PHE
42	561.43	37	556.78	25.419	552.82
41	560.65	36.75	556.73	25.32	552.73
40.1	560.33	36.5	556.64	25.221	552.59
39.856	560.04	36.25	556.54	25.122	552.52
39.612	559.41	36	556.41	25.023	552.49
39.368	558.99	27.201	556.29	24.924	552.39
39.124	558.49	27.102	556.07	24.825	552.37
38.88	558.03	27.003	555.62	24.726	552.33
38.635	557.71	26.904	555.38	24.627	552.27
38.391	557.63	26.805	555.08	24.528	551.80
38.147	557.53	26.706	554.66	24.429	551.71
37.903	557.29	26.607	554.39	24.33	551.57
37.659	556.92	26.508	554.19	24.231	551.33
37.415	556.90	26.409	554.05	24.132	551.13
37.171	556.84	26.31	554.02	24.033	551.03
		26.211	553.95	23.934	550.92
		26.112	553.88	23.835	550.81
		26.013	553.69	23.736	550.67
		25.914	553.18	23.637	550.49
		25.815	553.11	23.538	550.39
		25.716	553.04	23.439	550.28
		25.617	552.94		

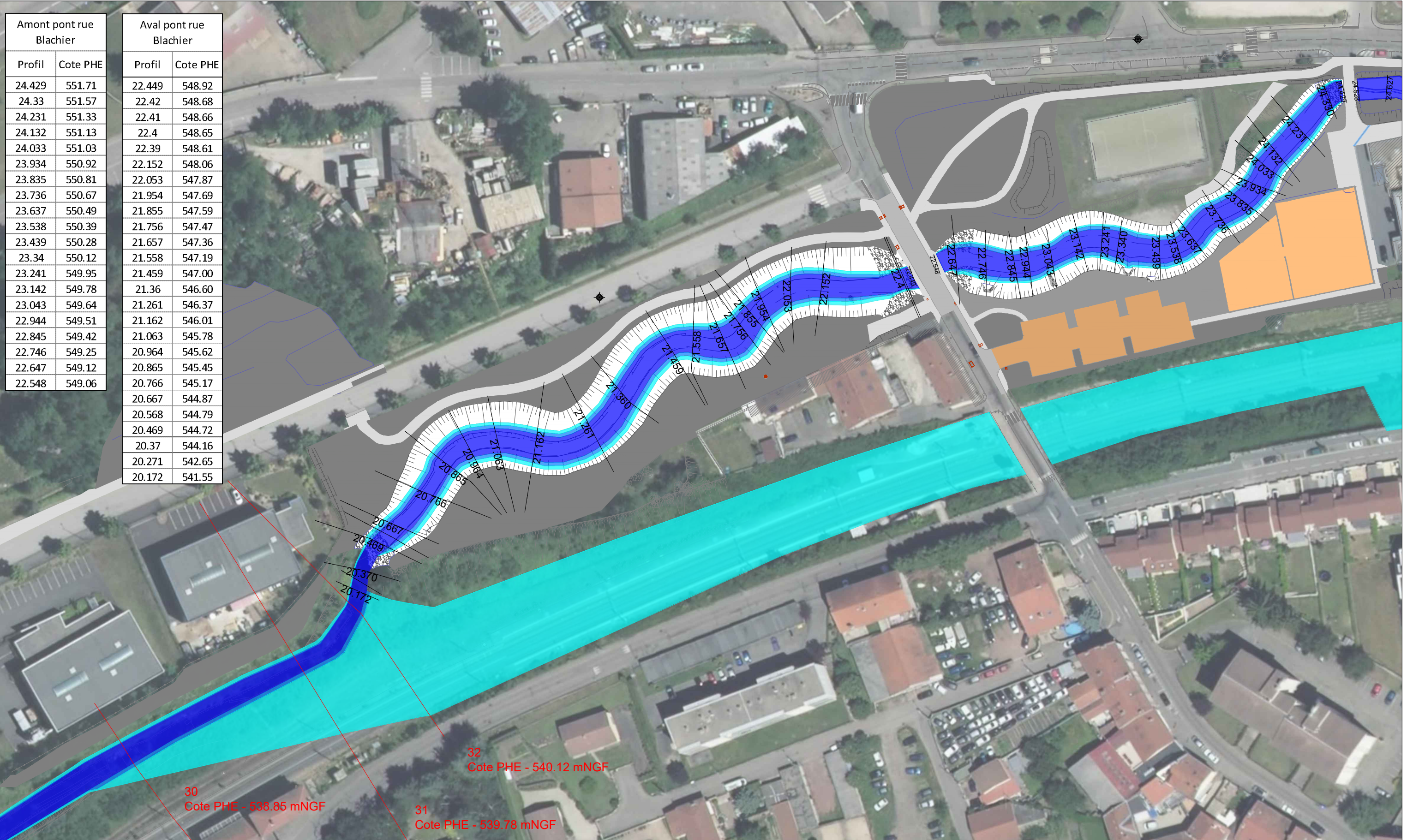
Hauteurs d'eau en crue centennale

- H < 0.5 m
- 0.5 < H < 1 m
- H > 1 m



Profil en travers - modélisation hydraulique

Etude hydraulique post-travaux sur l'Ondaine à la Ricamarie					
Carte des hauteurs d'eau n°1					
Indice Ind 1	Date 05/05/22	Etabli ED	Vérifié PG	Echelle 1/1000	



Amont pont rue Blachier	
Profil	Cote PHE
24.429	551.71
24.33	551.57
24.231	551.33
24.132	551.13
24.033	551.03
23.934	550.92
23.835	550.81
23.736	550.67
23.637	550.49
23.538	550.39
23.439	550.28
23.34	550.12
23.241	549.95
23.142	549.78
23.043	549.64
22.944	549.51
22.845	549.42
22.746	549.25
22.647	549.12
22.548	549.06

Aval pont rue Blachier	
Profil	Cote PHE
22.449	548.92
22.42	548.68
22.41	548.66
22.4	548.65
22.39	548.61
22.152	548.06
22.053	547.87
21.954	547.69
21.855	547.59
21.756	547.47
21.657	547.36
21.558	547.19
21.459	547.00
21.36	546.60
21.261	546.37
21.162	546.01
21.063	545.78
20.964	545.62
20.865	545.45
20.766	545.17
20.667	544.87
20.568	544.79
20.469	544.72
20.37	544.16
20.271	542.65
20.172	541.55

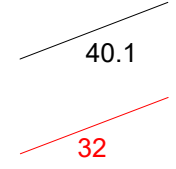
30
Cote PHE - 538.85 mNGF

31
Cote PHE - 539.78 mNGF

32
Cote PHE - 540.12 mNGF

Hauteurs d'eau en crue centennale

- H < 0.5 m
- 0.5 < H < 1 m
- H > 1 m



40.1 Profil en travers - modélisation hydraulique

32 Profil en travers - PPRI - aval zone d'étude

Etude hydraulique post-travaux sur l'Ondaine à la Ricamarie

Carte des hauteurs d'eau n°2

Indice	Date	Etabli	Vérfié	Echelle
Ind 1	05/05/22	ED	PG	1/1000

